



permaculture

Can we survive climate chaos?











► Succession and scale



Succession



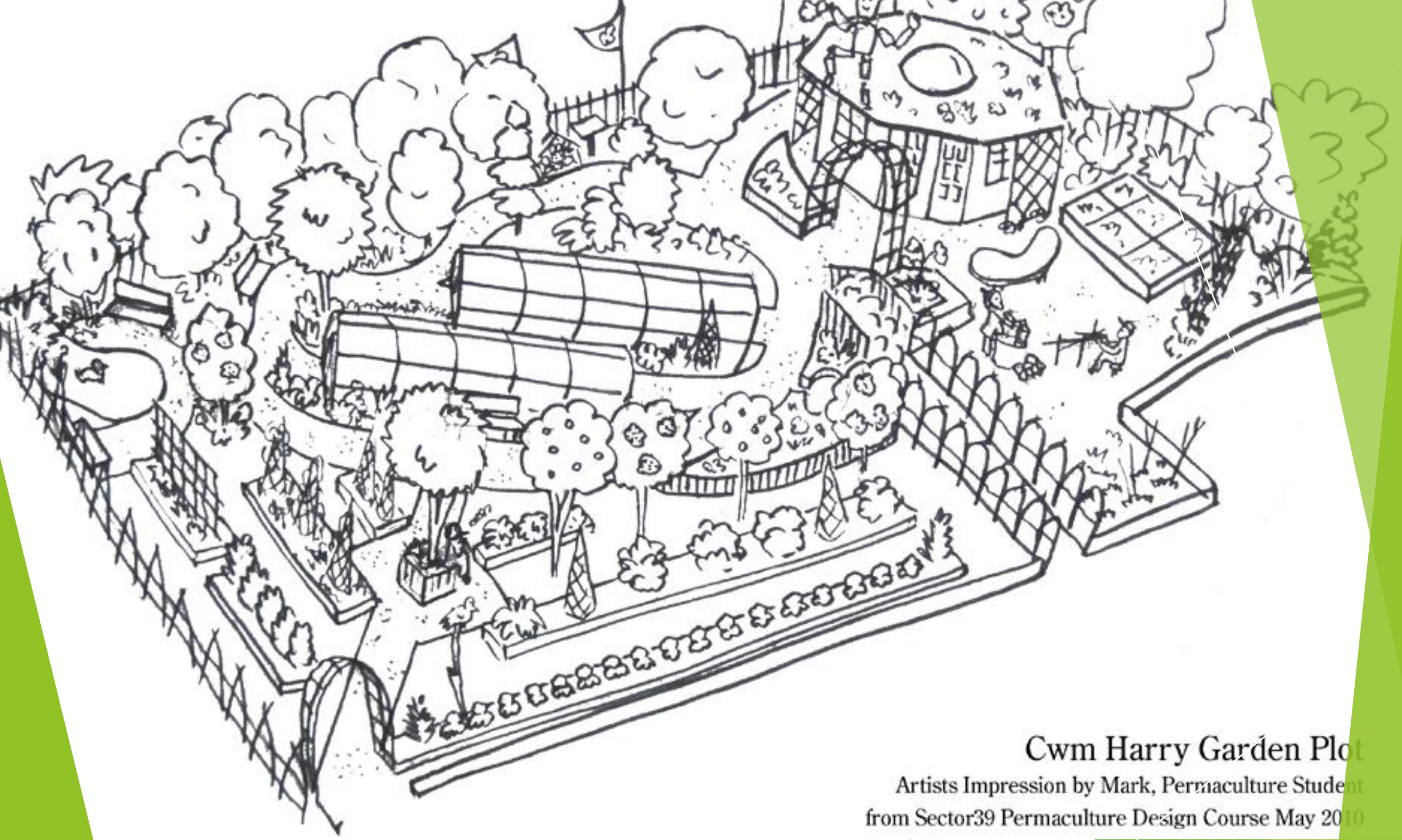
Maroc

- ▶ High Atlas
- ▶ Design to catch water, build soils and develop long term yields to support the community









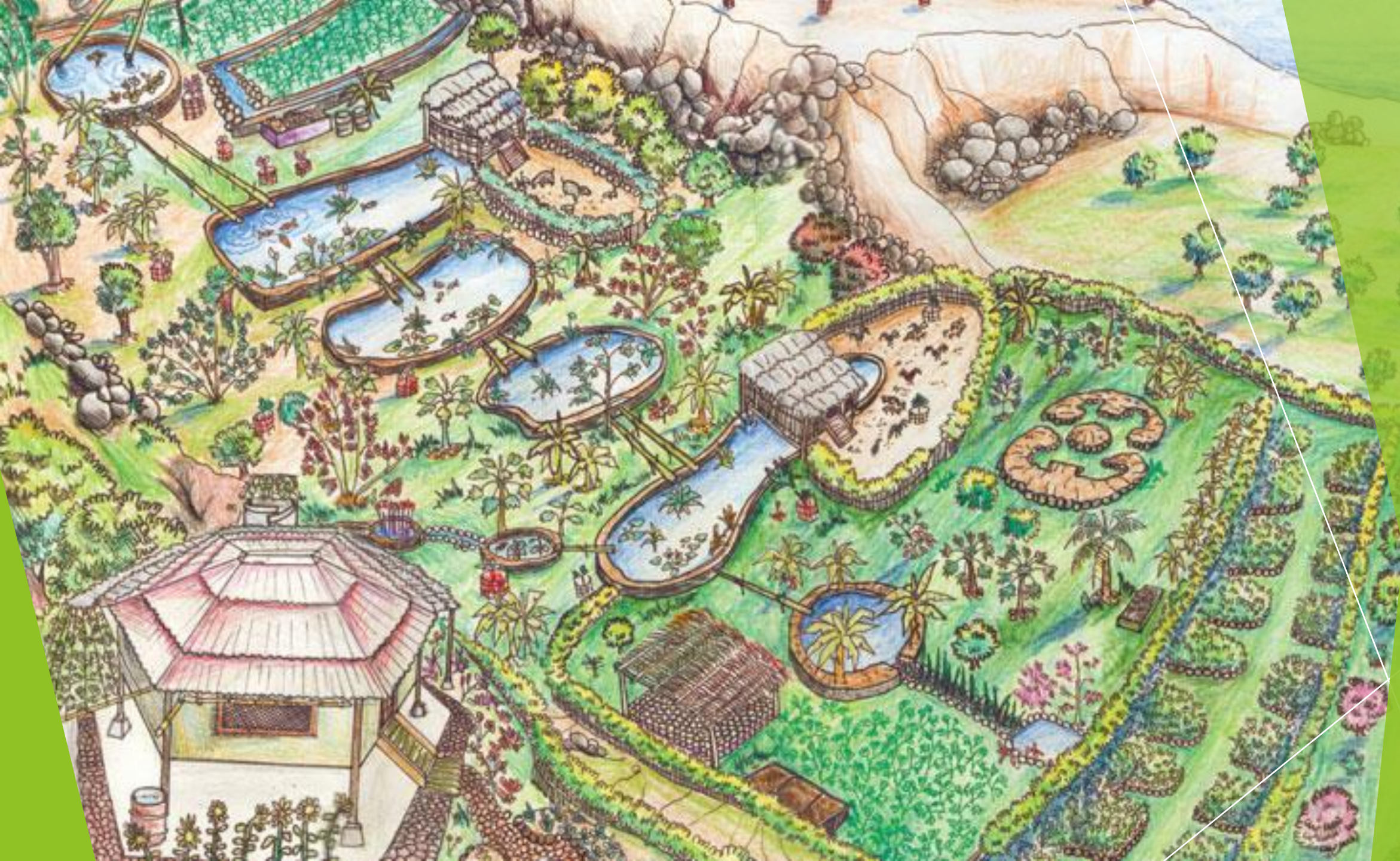
Cwm Harry Garden Plot

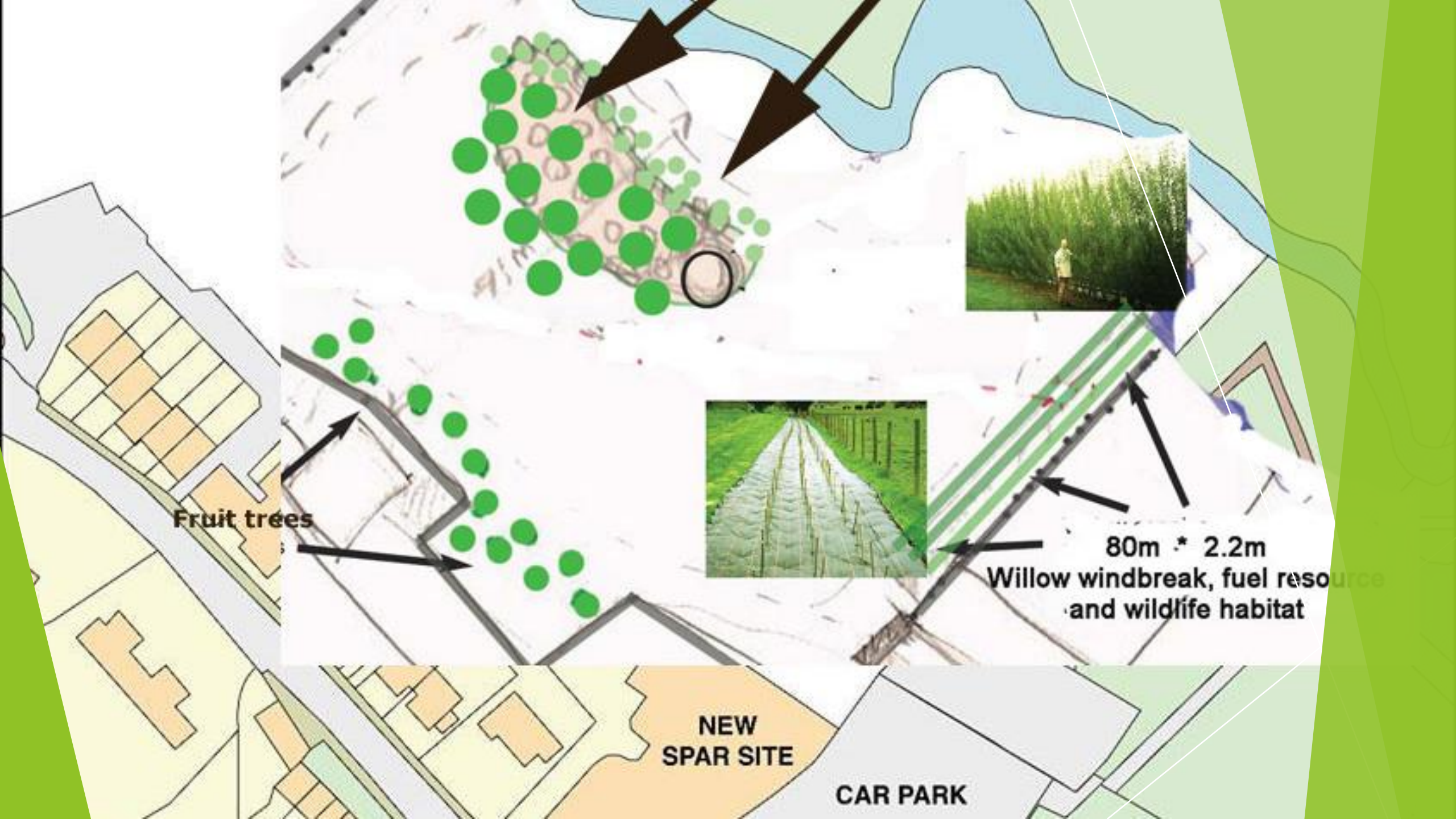
Artists Impression by Mark, Permaculture Student
from Sector39 Permaculture Design Course May 2010













Supporting trees: Elder, Hazel, Dog Rose, Sloe

Yellow rattle

- ▶ Parasitic on grass roots





Coppice











► MENCAP

There is very clearly a huge overlap between social care, community care and caring in the landscape. Working with MENCAP in the project has opened eyes to the possibilities of community involvement. Wonderful people to work with, who loved the outdoors and once they were familiar with the space.

healing, as well

tually a remarkable amount of useful work done and provided many opportunities for collaboration between the various people MENCAP also work with on their support staff. A wider and unexpected benefit was that as people saw the broader community working on the garden the more they seem to feel connected to it and have a sense of ownership of the space.

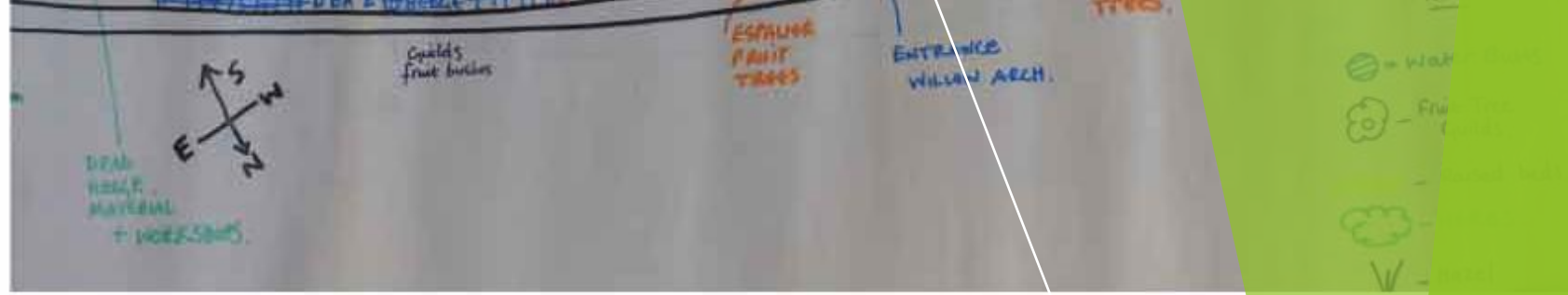
Back to the core mission of the project, using permeability to ameliorate climate disruption and vulnerability is to build relationships that are in some ways mutually beneficial. A lesson from sustainability and natural systems is the

importance of the interconnections between elements in an ecosystem. this is also true in a social ecosystem and in a very real way when we are engineering a new landscape we are engineering a social system. creating ways for people to be able to connect



organically from a perceived need within the community.

OSOP used a Permacutlure study group, who were doing design work on community interactions with the landscape to come up with a plan for us to present to the Llanfyllin community.



They chose 2 examples one was a derelict small farm, with high potential ecological value and the other an underused edge space in our community field. The outputs of this work were disseminated via BRACE meetings, reaching town and county councilor ears as well a broad section of the local community.

The talks, dialogues and outputs from the this process led to Llanfyllin Town Council

Global links

► One people one planet

OSOP is a Welsh project, based in Powys working with the local community. Our local community is part of the global community and that is reflected in everything we work on. OSOP project is an idea of OSOP, one is



we are one people sharing single eco-systems. we breath the same air and drink the same water it is a reality. Solving the climate crisis also requires us all to see our place in this inter connected world.



historically via Dolen Ffermio farmers in Llanfyllin have an exchange charity linking them and the school to a school in eastern Uganda and Busoga school. There have been many exchange visits over the years.

We were very fortunate to host the visit of Geraint from the Permaculture Research Institute. In some we have been collaborating with similar organisations and came to develop



teaching and to help develop projects between ours and communities in East Africa. He came to visit our transition project, our gardens and more to collect inspiration and to put in the work back to Uganda and to put in the work

Community

- Many ways to reach school age people
- Build links between people and landscape
- Self managing systems

School is one way to reach the younger generations but there are many other opportunities too. Cubs, scouts, clubs, home visits, public events, the story of the place, all help to bring people into the space and many



to engage with nature and link people to the themes of the project. Another very interesting unexpected work came from our regular field with a team from MENCAP. The Llanfyllin community is very used to see



the MENNCAP service users around the community and we have engaged with them on a great many times over the years, especially in year 2 and 3 of the project. It is during that time that the wide community of Llanfyllin is learning to make use of the evolving space in the Llanfyllin Fach field. What has been the community's response to the relationship between the space is seen in the way the MENCAP service users say it has improved the

community function of the landscape and as a result people seem more likely to use the space and more likely to use it. We are working on the cause whenever we are working on the





Dragons

